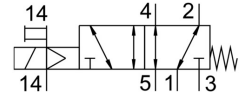


# Air solenoid valve VSVA-B-M52-MZH-A1-1R5L

FESTO

Part number: 534546



## Data sheet

| Feature  | Value   |
|--|---|
| Valve function   | 5/2, monostable   |
| Actuation type   | Electrical  |
| Width  | 26 mm   |
| Pneumatic working port   | Sub-base, size 26 mm as per ISO 15407-1                                   |
| Operating voltage  | 24V DC  |
| Operating pressure   | -0.09 MPa ... 1.6 MPa   |
| Operating pressure   | -0.9 bar ... 16 bar   |
| Structural design  | Piston gate valve   |
| Reset method   | Mechanical spring   |
| Certification  | RCM compliance mark<br>c UL us - Recognized (OL)                          |
| CE marking (see declaration of conformity)                             | As per EU EMC directive   |
| Degree of protection   | IP65<br>NEMA 4  |
| Nominal width  | 9 mm  |
| Width dimension  | 27 mm   |
| Type code  | VSVA  |
| Exhaust air function   | With flow control option<br>Via throttle plate<br>Via individual sub-base |
| Sealing principle  | Soft  |
| Mounting position  | Any   |
| Conforms to standard   | ISO 15407-1   |
| Manual override  | Non-detenting   |
| Type of control  | Pilot-controlled  |
| Pilot air supply port  | External  |
| Flow direction   | Any   |
| Symbol   | 00991190  |
| Lap  | Overlap   |
| Signal status display  | LED   |
| Pilot pressure   | 3 bar ... 8 bar   |
| b-value  | 0.25  |
| C value  | 4.5 l/sbar  |
| Flow rate of pneumatic valve   | 1400 l/min  |
| Flow rate of pneumatic valve on individual sub-base                    | 1100 l/min  |
| Optimized flow rate of pneumatic valve pneumatically concatenated flow | 1100 l/min  |
| Switching time off   | 52 ms   |

| Feature                                   | Value  |
|---|--|
| On switching time                         | 20 ms  |
| Duty cycle                                | 100%   |
| Max. positive test pulse with 0 signal    | 500 µs   |
| Max. negative test pulse on 1 signal      | 500 µs   |
| Nominal pick-up current per solenoid coil | 110 mA to 20 ms  |
| Nominal current with current reduction    | 30 mA after 20 ms  |
| Coil characteristics                      | 24 V DC: low-current phase 1.0 W, high-current phase 2.4 W                           |
| Permissible voltage fluctuations          | +/- 10 %   |
| Operating medium                          | Compressed air as per ISO 8573-1:2010 [7:4:4]  |
| Information on operating and pilot media  | Operation with oil lubrication possible (required for further use)                   |
| Vibration resistance                      | Transport application test with severity level 2 as per FN 942017-4 and EN 60068-2-6 |
| Shock resistance                          | Shock test with severity level 2 as per FN 942017-5 and EN 60068-2-27                |
| Corrosion resistance class (CRC)          | 2 - Moderate corrosion stress  |
| Temperature of medium                     | -5 °C ... 50 °C  |
| Relative air humidity                     | 0 - 90 %   |
| Pilot medium                              | Compressed air as per ISO 8573-1:2010 [7:4:4]  |
| Ambient temperature                       | -5 °C ... 50 °C  |
| Max. tightening torque for valve mounting | 1.8 Nm ... 2.2 Nm  |
| Product weight                            | 270 g  |
| Electrical connection                     | 3-pin<br>M12x1<br>Central plug<br>Round design                                       |
| Type of mounting                          | On sub-base<br>With through-hole and screw   |
| Pilot air port 12/14                      | Sub-base, size 26 mm as per ISO 15407-1  |
| Pilot exhaust air port 82/84              | Optionally:<br>Not ducted as per standard<br>Ducted                                  |
| Note on materials                         | RoHS-compliant   |
| Seals material                            | FPM<br>HNBR<br>NBR   |
| Housing material                          | Die-cast aluminum  |